

Results DOC



Why should you care?

Our journey

Results framework

Managing for results

Road ahead

Testimonials

Results DOC



Results DOC



Why should you care?

Our journey

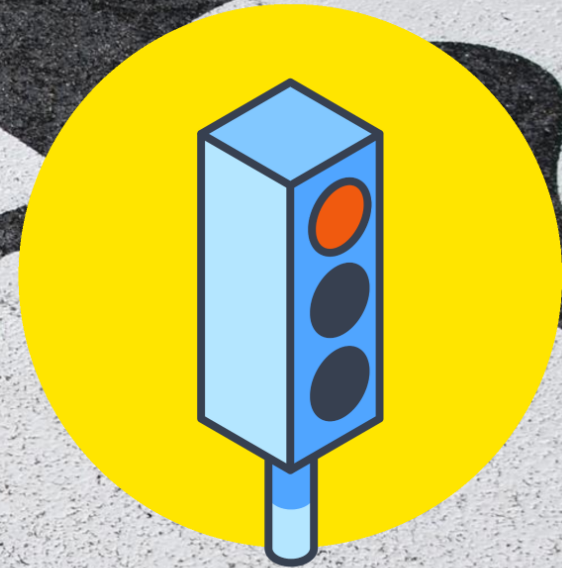
Results framework

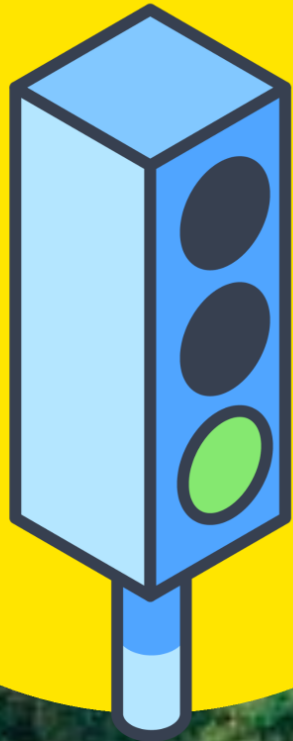
Managing for results

Road ahead

Testimonials

What is Outcome Based Management?





What's in
it for you?

Results DOC



Why should you care?

Our journey

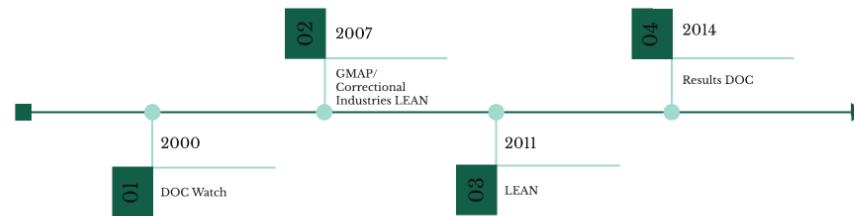
Results framework

Managing for results

Road ahead

Testimonials

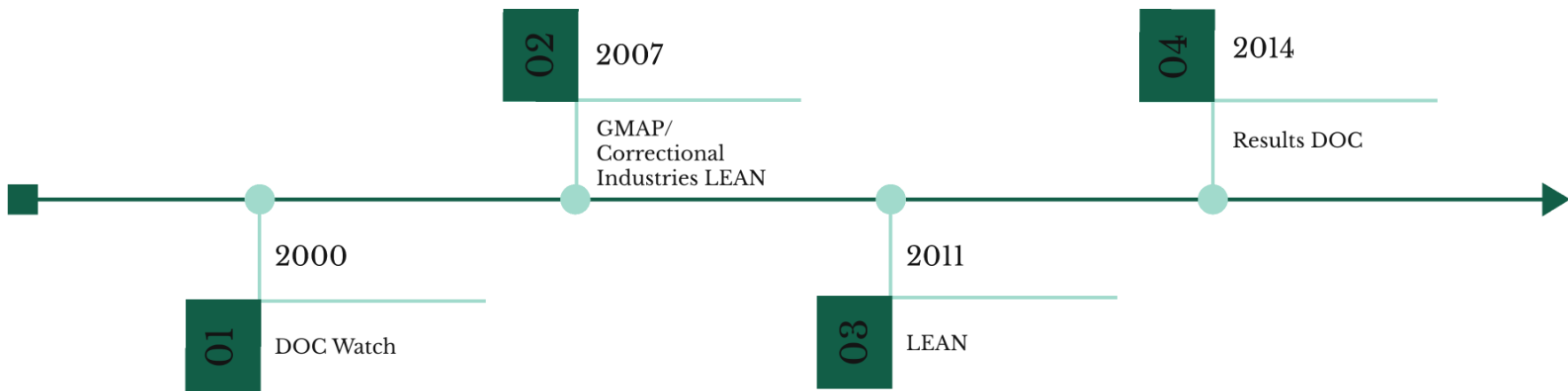
TIMELINE



Not so effective

Our best learning

TIMELINE



An aerial photograph of a road with a yellow circle overlay. The circle contains the text 'Not so effective' and a bulleted list. The background shows a road, a dirt shoulder, and green vegetation.

Not so effective

- No employee input
- Follow through
- Pockets of awareness

An aerial photograph of a winding asphalt road with white dashed lane markings. The road curves through a landscape of green trees and brownish soil. A large, bright yellow circle is superimposed over the center of the image, containing text and a bulleted list.

Our best learning

- Employees engaged
- Light structure
- Building capacity

Results DOC



Why should you care?

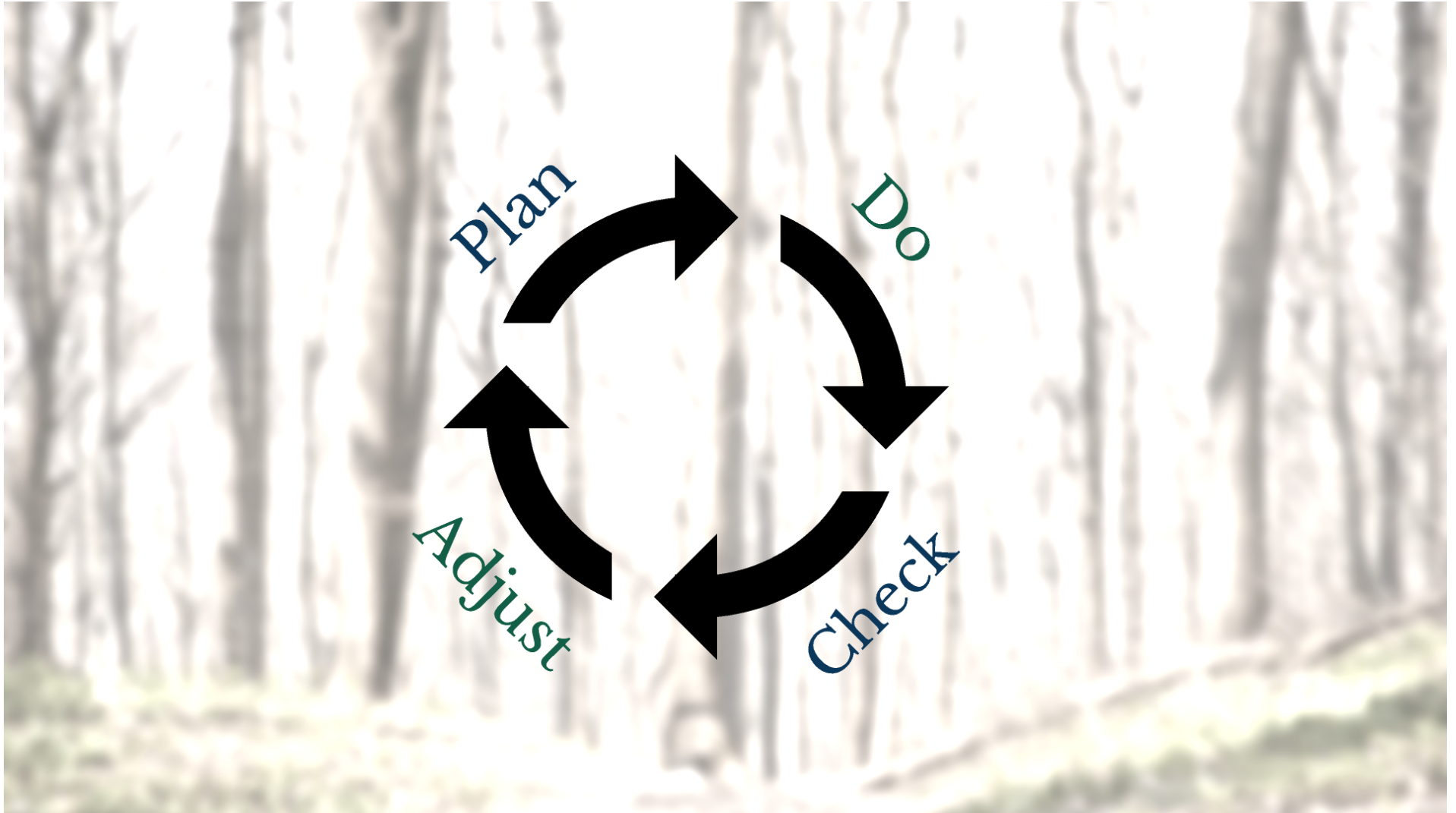
Our journey

Results framework

Managing for results

Road ahead

Testimonials

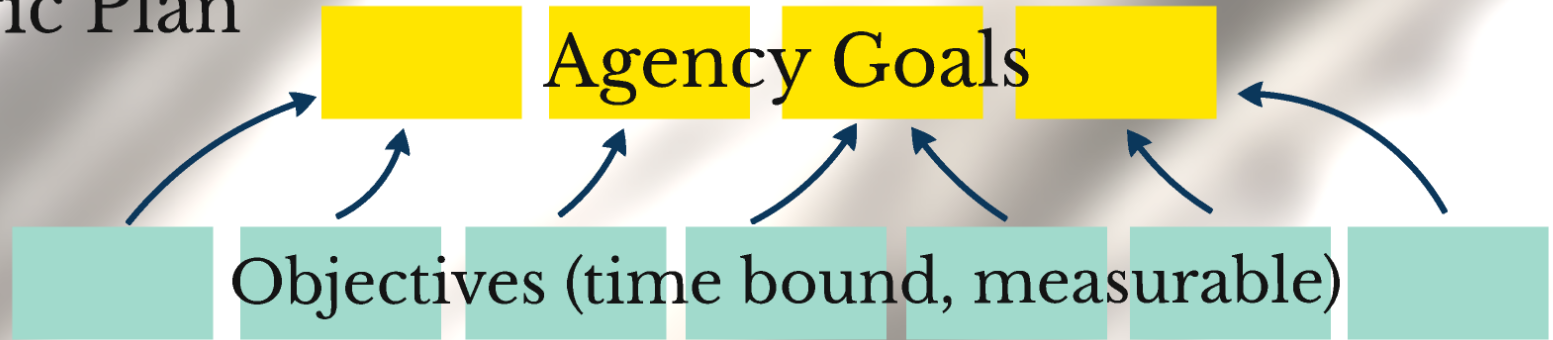


Operations

Plan

Plan

Strategic Plan



Operational Plans

Plans

Plan

Strategic Plan

Agency Goals

Objectives (time bound, measurable)

Business plans for each division

Administrative Operations

Community Corrections

Health Services

Office of the Deputy Secretary

Prisons

Reentry

The Work

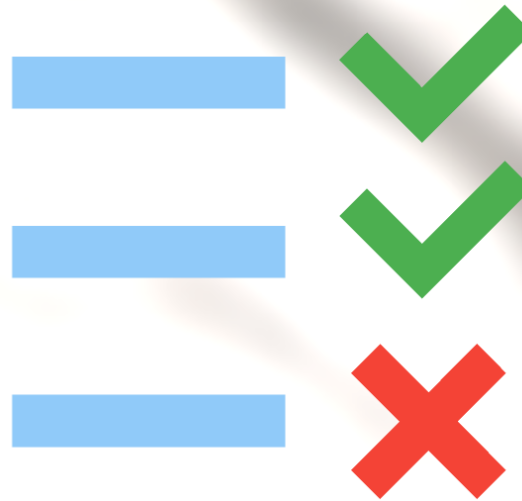
Plan



Do

Portfolio Management

Do



Check

Check

Objectives / Agency Measures

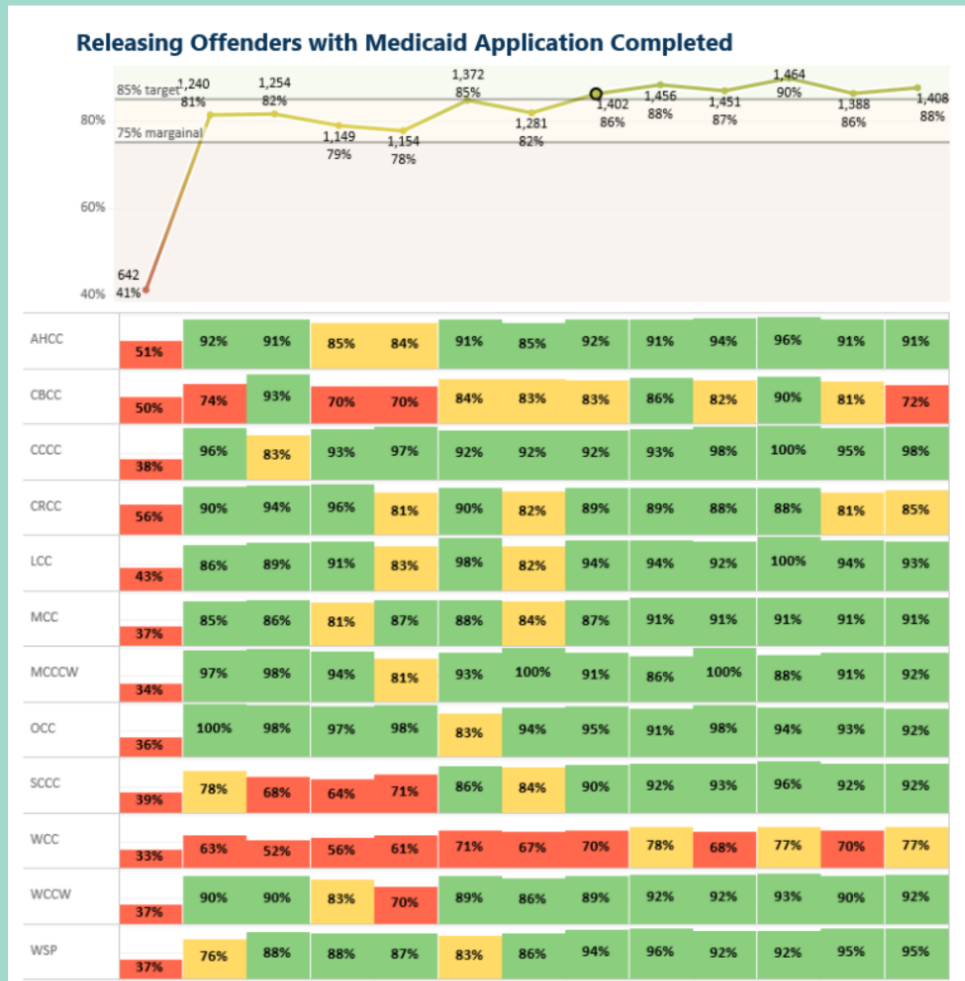


Check

Objectives / Agency Measures



Establish continuity of care plans for 40% of releasing individuals by 2023





Quarterly Results Reviews

Quarterly Results Reviews

Agency level

Outcomes

Division level

Leading
indicators

Adjust

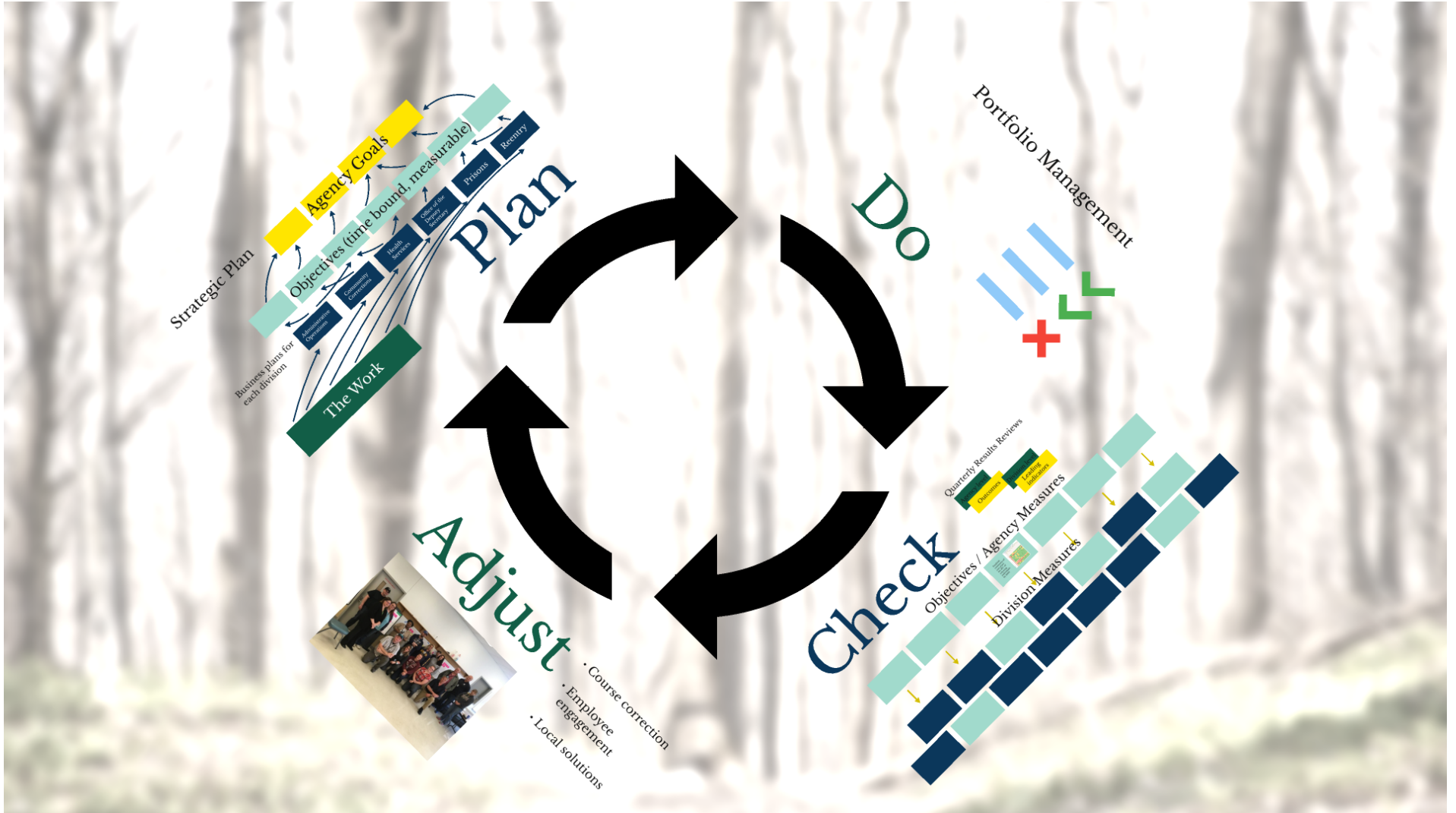
Adjust

- Course correction
- Employee engagement
- Local solutions

Adjust

- Course correction
- Employee engagement
- Local solutions





Results DOC



Why should you care?

Our journey

Results framework

Managing for results

Road ahead

Testimonials



Implementing Results Prisons

Before
results

After
results

Leader's
perspective

Conclusion





Traditional Management







Results DOC







Leading Results

Summary



Results DOC



Why should you care?

Our journey

Results framework

Managing for results

Road ahead

Testimonials

People

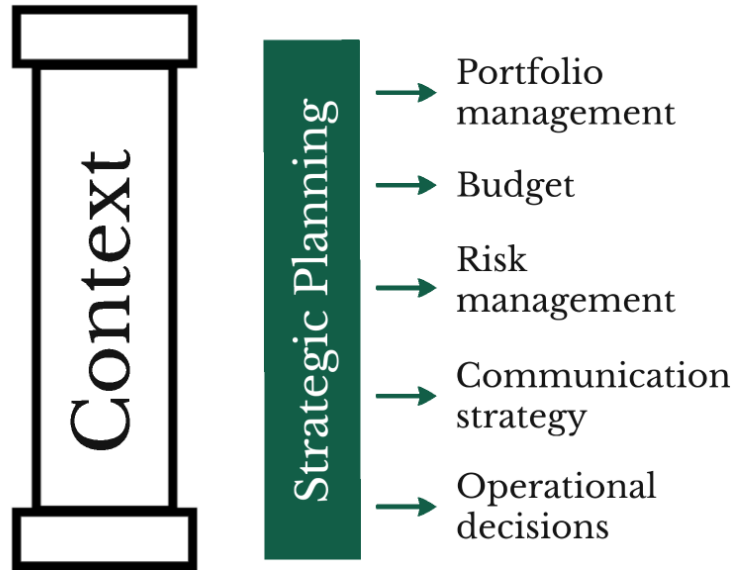




Context

Context

Strategic Planning







Context



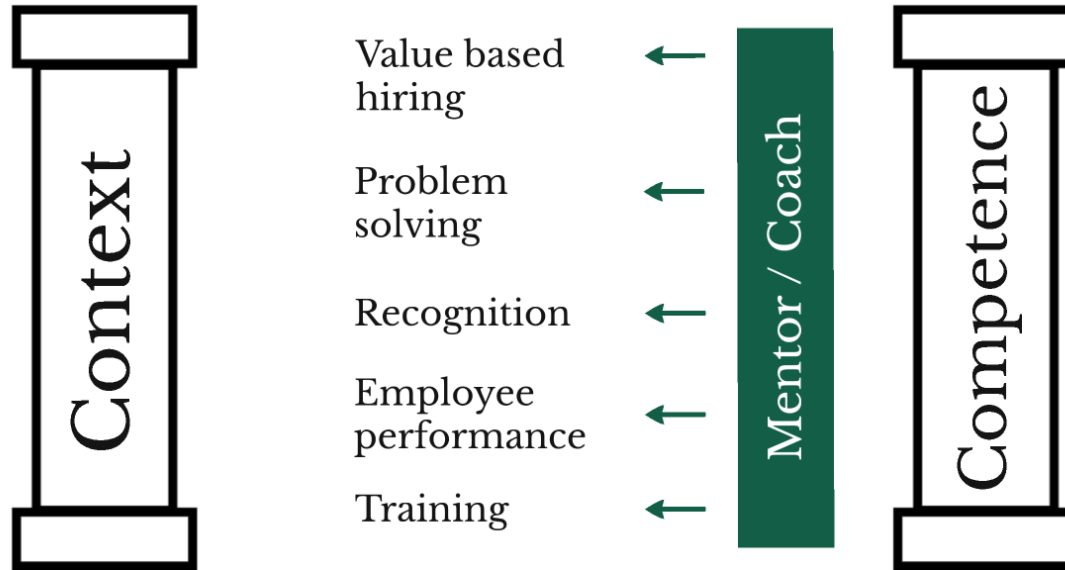
Competence



Context



Competence

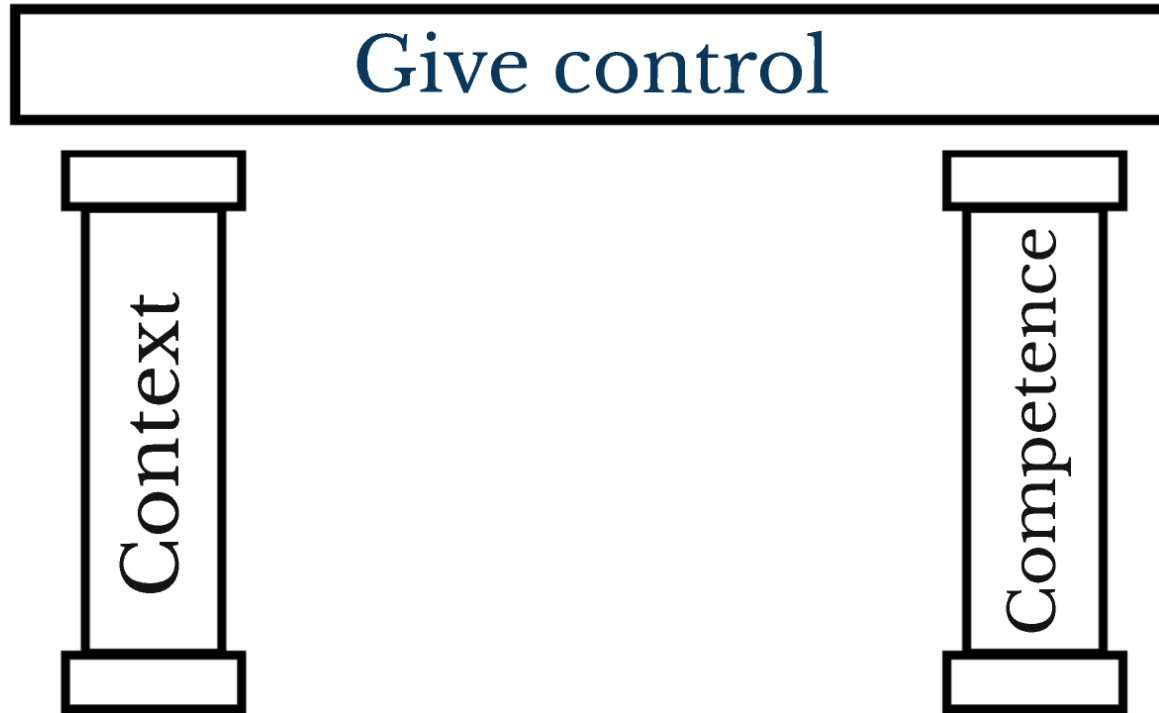




Context



Competence



Give control



Give control →



Give control → Nimble!

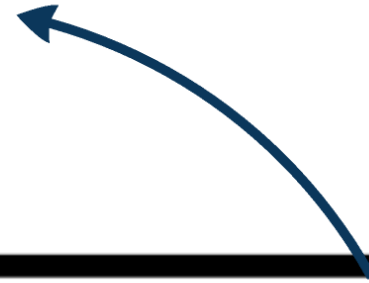




Give control → Nimble!



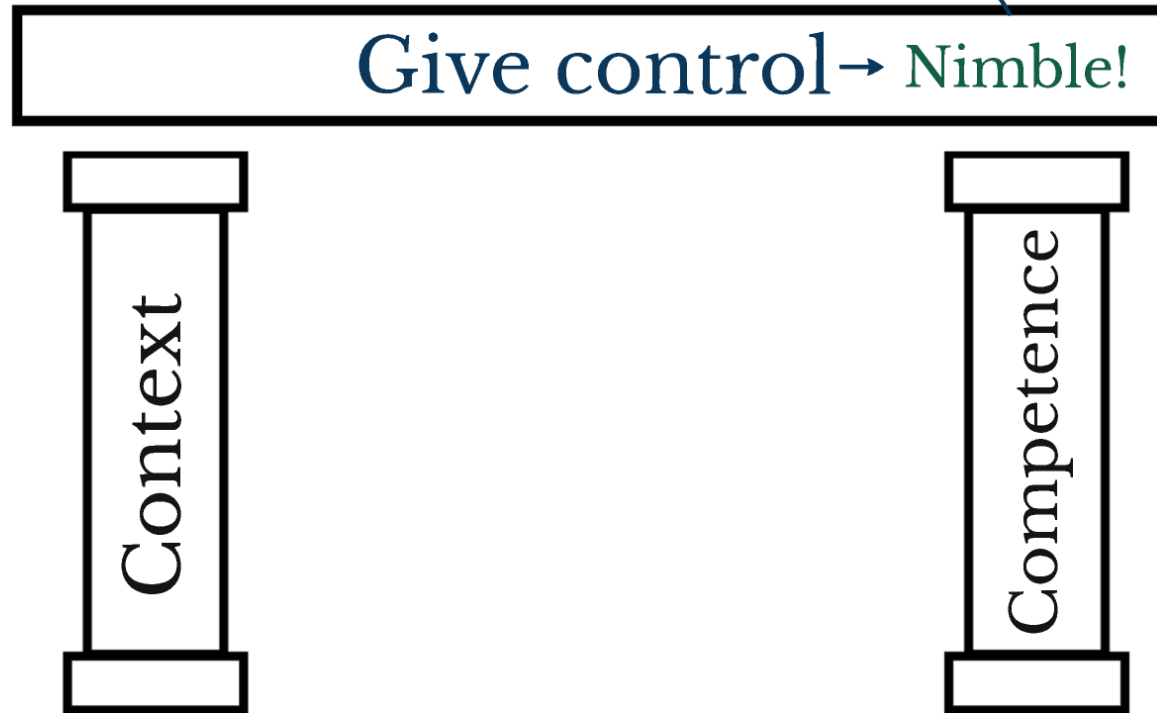
Results



Give control → Nimble!



Results



Mission: To
improve public
safety by positively
changing lives

Results DOC



Why should you care?

Our journey

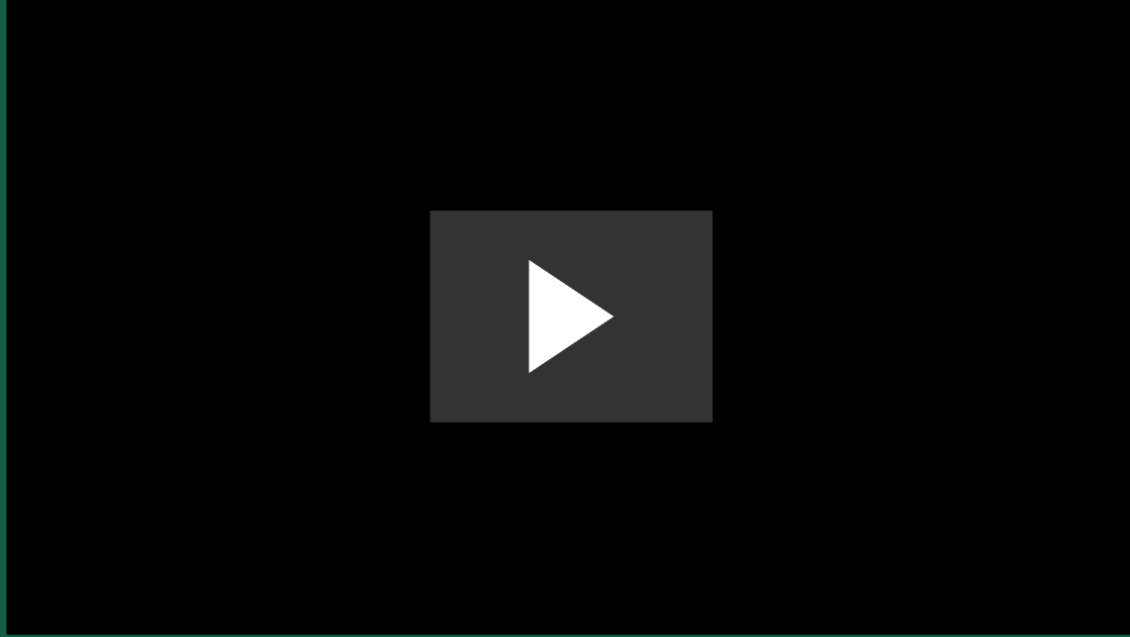
Results framework

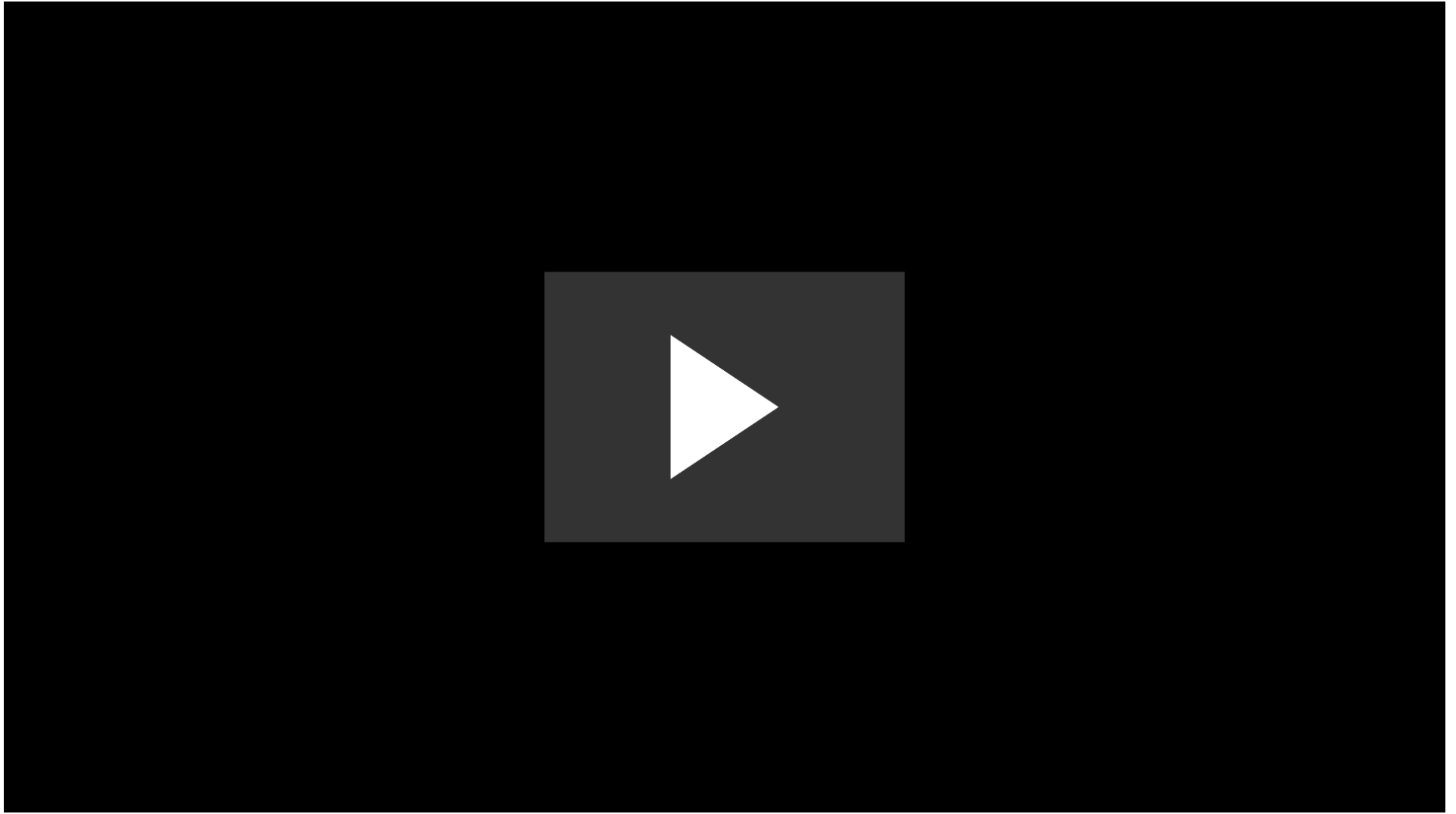
Managing for results

Road ahead

Testimonials

Testimonials





Questions?

Contact:

James (Jim) H. Dunivan
Director, Enterprise Results
Department of Corrections
jhdunivan@doc1.wa.gov
360-725-8415

Results DOC



Why should you care?

Our journey

Results framework

Managing for results

Road ahead

Testimonials